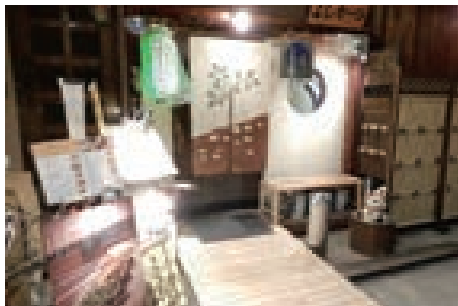
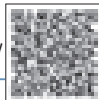


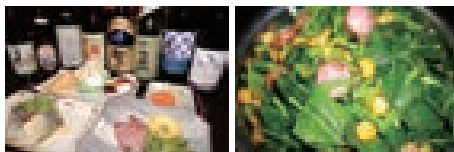
Oshiage Yoshikatsu

☎ 03-3829-6468

URL <http://www.hotpepper.jp/str.J000104266/>



- 📍 5-10-2 Narihira, Sumida-ku
- 🕒 Mon.-Sun. and Holidays 17:00 - 24:00 (Closing time: 22:30)
Lunch only on Sundays and Holidays 11:30 - 14:00
(Open for dinner on Sundays and Holidays by reservation only)
- ✕ Irregular
- 🚶 4 min. walk from Oshiage Station Exit B1 on each line



Signature menu

"Tsubaki," a snack set brimming with Tokyo ingredients

Available Year-round

Ingredients used Edo Tokyo vegetables, Tokyo milk, fishes from Tokyo Islands, Sakura eggs (Machida), soybeans (from Hinode and Ome), TOKYO X Pork

Green Monjayaki (Ashitaba Monja served with baguettes)

Available Year-round

Ingredients used Yanagikubo wheat (Higashikurume), flour (Ome), cabbages (produced in Tokyo), Ashitaba (from Tokyo Islands), TOKYO X Pork sausage, Oshima butter (Izu Oshima Island)



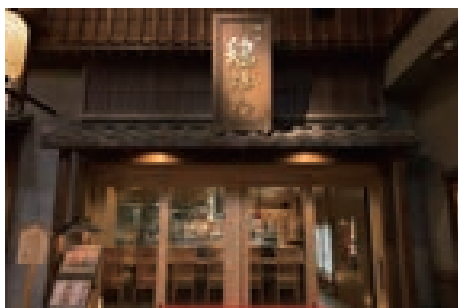
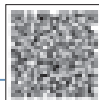
*Regarding seasoning, we use Tokyo produced seasonings in general, including *Hingya* salt.

Nezu Torihana (Ryogoku Edo NOREN)

Tokyo Shamo Chicken Restaurant

☎ 03-6658-8208

URL <http://www.tokyoshamo.com/>



- 📍 1-3-20 Yokoami, Sumida-ku
- 🕒 Lunch 11:00 - 14:00
Dinner 17:00 - 21:30
- ✕ Mondays (Tuesday if Monday is a holiday)
- 🚶 Edo NOREN can be accessed directly via JR Ryogoku Station West Exit.



Signature menu

Tokyo Shamo Chicken Course Meal

Available Year-round

Ingredients used Tokyo Shamo Chicken

Tokyo Shamo Chicken Oyakodon

Available Year-round

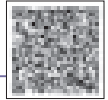
Ingredients used Tokyo Shamo Chicken



Kameido Masumoto Honten

☎ 03-3637-1533

URL <https://masumoto.co.jp/>



📍 4-18-9 Kameido, Koto-ku

🕒 Mon-Fri 11:30 - 14:30/17:00 - 21:00
Weekends and
Holidays 11:00 - 14:30/17:00 - 21:00

* Last Call: 19:30

✕ 3rd Monday of each month (excluding January, August and December) or Tuesday if a national holiday falls on Monday.

🚶 7 min. walk from Kameido Station on each line



Signature menu

Kameido *Daikon* and *Asari* Clam Hot Pot

Available Year-round for dinner menu

Ingredients Kameido *Daikon* radish (from used Katsushika and Edogawa)

Kameido *Daikon* Zushi

Available Year-round for dinner menu

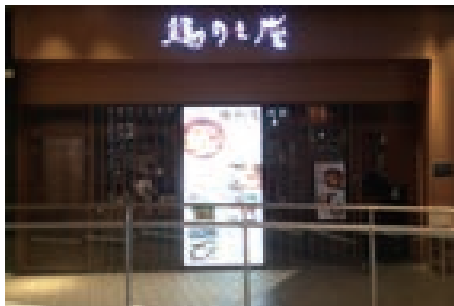
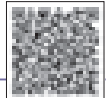
Ingredients Kameido *Daikon* radish (from used Katsushika and Edogawa)



Torimikura DiverCity Tokyo Plaza

☎ 03-6457-2636

URL <http://www.wid.co.jp/>



📍 6F Diversity Tokyo Plaza
1-1-10 Aomi, Koto-ku

🕒 Lunch 11:00 - 16:00
Dinner 16:00 - 23:00

✕ Open every day (or closed according to the closed days of the facility)

🚶 3 min. walk from Rinkai Line Tokyo Teleport Station
5 min. walk from Yurikamome Line Daiba Station



Signature menu

Charcoal-Grilled Tokyo *Shamo* Chicken *Oyakodon*

Available Year-round

Ingredients Tokyo *Shamo* Chicken used

Tokyo *Shamo* Chicken Hot Pot

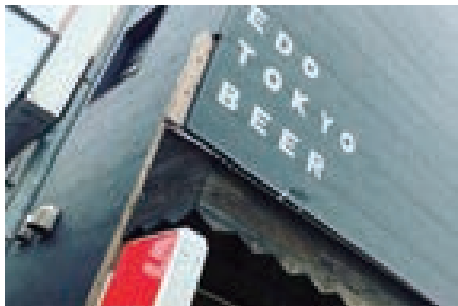
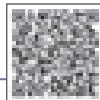
Available Year-round

Ingredients Tokyo *Shamo* Chicken used



Edo Tokyo Beer On Tap

☎ 03-6659-8379

URL <https://edo-tokyo-beer.com/>

- 📍 16-2 Senda, Koto-ku
- 🕒 Mon, Wed, Tur, Fri: 17:00 – 23:00
Sat & Sun: 13:00 – 22:00
- ✖ Tuesdays
- 🚶 Immediately after getting off at Ogibashi 2-chome bus stop
10 min. walk from Sumiyoshi Station subway Exit B1



Signature menu

Beer using Edo Tokyo vegetables
(Ex: Japanese ginger beer from Jan.~April)

Available Year-round

Ingredients Waseda *myoga* Japanese ginger used
(from Nerima), etc.

Pickles and soaked Waseda
myoga Japanese ginger stalks

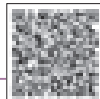
Available February, March

Ingredients Waseda *myoga* Japanese ginger used
(from Nerima)



SHINAGAWA KASHO KYO-AN

☎ 03-3471-6395

URL <http://kyo-an.net/>

- 📍 2-30-27-1F Kitashinagawa, Shinagawa-ku
- 🕒 9:30 – 20:00
- ✖ Tuesdays
- 🚶 4 min. walk from Keikyu Line Shimbaba Station



Signature menu

Shinagawa Sweets Turnip

Available November to March (harvest period of turnip)

Ingredients Shinagawa *kabu* turnip (from used Shinagawa and Kodaira)

Shinagawa *Kabure* Cookie

Available November to March (harvest period of turnip)

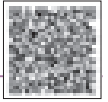
Ingredients Shinagawa *kabu* turnip (from used Shinagawa and Kodaira)



BISTRON

☎ 03-6451-3143

URL <https://www.bistron-ebaramachi.com/>



📍 1F Sakanazome Bldg., 5-7-4 Nakanobu Shinagawa-ku

🕒 Lunch (Mon - Fri) 11:30 - 15:00 (Last Call 14:30)
(Weekends and Holidays) 11:30 - 16:00 (Last Call 15:00)
Dinner 17:00 - 23:00 (Last Call 22:00)

✖ Wednesdays

🚶 1 min. walk from Tokyu Oimachi Line Ebaramachi Station



Signature menu

Grilled vegetable set for cheese fondue

Available Year-round

Ingredients Seasonal vegetables produced in Tokyo

Bagna Càuda with Colorful Grilled Vegetables

Available Year-round

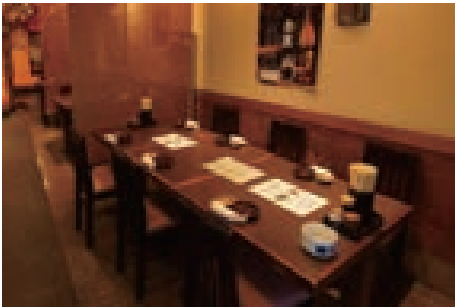
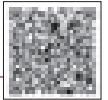
Ingredients Seasonal vegetables produced in Tokyo



Chanko Harumi

☎ 03-3787-0141

URL <http://www.ha-ru-mi.com/>

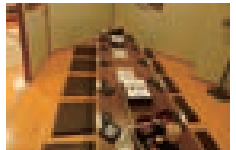


📍 5-4-11 Nakanobu Shinagawa-ku

🕒 17:00 - 24:00

✖ Thursday

🚶 2 min. walk from Tokyu Oimachi Line Ebaramachi Station



Signature menu

Assorted Sashimi from Tokyo

Available Year-round

Ingredients Fish and shellfish from Tokyo used
*Varies according to the season and harvest

Tokyo Chanko Nabe Hot-pot

Available Winter

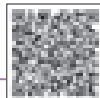
Ingredients Seasonal vegetables produced in Tokyo



Turkish Restaurant DEDE

☎ 03-3786-5600

URL



- 📍 5-6-17 Nakanobu Shinagawa-ku
- 🕒 Lunch 11:00 – 14:30
Dinner 17:00 – 23:00
- ✖ Irregular
- 🚶 1 min. walk from Tokyu Oimachi Line Ebaramachi Station Shoumen Exit



Signature menu

Kebab Vegetables

Available Year-round

Ingredients Seasonal vegetables produced in Tokyo

Chef's Recommended Grill/Salad etc.

Available Year-round

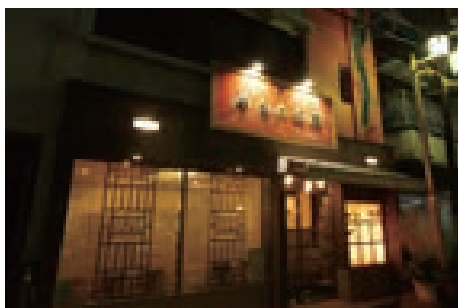
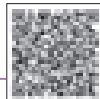
Ingredients Seasonal vegetables produced in Tokyo



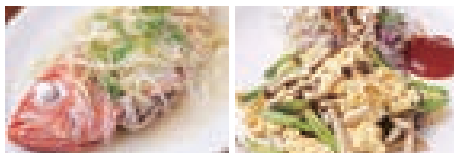
Yamako Hanten Chinese Cooking

☎ 03-3782-4990

URL <http://yamakohanten.jp/>



- 📍 5-13-15 Nakanobu Shinagawa-ku
- 🕒 11:30 – 14:30
17:00 – 21:30
- ✖ Mondays
- 🚶 5 min. walk from Tokyu Oimachi Line Ebaramachi Station



Signature menu

Steamed Fresh Fish

Available Year-round

Ingredients Fresh Izu Islands fish

Tokyo eggstir-fly

Available Year-round

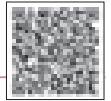
Ingredients Seasonal vegetables from Tokyo (mainly produced in Kunitachi and Tachikawa), Tokyo eggs from Hino



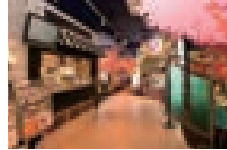
Jiyugaoka Sweets Forest
Berry Berry

☎ **03-5731-6600**

🌐 <http://www.sweets-forest.com/>



- 📍 2F La Cour Jiyugaoka, 2-25-7 Midorigaoka, Meguro-ku
- 🕒 10:00 – 20:00
- ✖ Open every day (except New Year's Day)
- 🚶 5 min. walk from South Exit of Jiyugaoka Station on Tokyu Toyoko and Oimachi Lines.



Signature menu

Tokyo Milk Gelato Parfait

Available Year-round (may not be available in winter time)

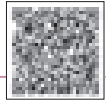
Ingredients Golden Rule Milk Gelato
 used (from Isonuma Farm in Hachioji)



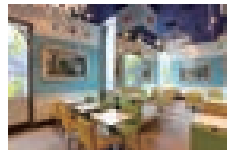
Jiyugaoka Sweets Forest
Mercy Crepe

☎ **03-5731-6600**

🌐 <http://www.sweets-forest.com/>



- 📍 2F La Cour Jiyugaoka, 2-25-7 Midorigaoka, Meguro-ku
- 🕒 10:00 – 20:00
- ✖ Open every day (except New Year's Day)
- 🚶 5 min. walk from Tokyu Toyoko Line/Tokyu Oimachi Line Jiyugaoka Station South Exit.



Signature menu

Oka-honey Custard

Available Year-round (may not be available in winter time depending on the honey harvesting conditions)

Ingredients Jiyugaoka honey (Jiyugaoka bee project)
 used



Vegetable Italian
Yakumo 111Signature
menu

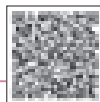
Local (Tokyo) Vegetable Salad Buffet

*served for lunch set meals

Available Year-round

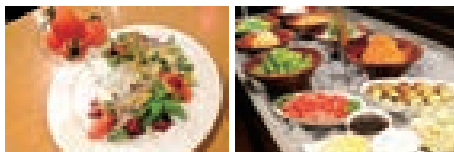
Ingredients Some of the ten different kinds of vegetables are selected from local used vegetables (depending on the season)

☎ 03-3724-5515

URL <http://yakumo111.com/>📍 Inside the Meguro Persimmon Hall
1-1-1 Yakumo, Meguro-ku🕒 Lunch 11:00 - 15:00 (Last Call 14:30)
Teatime 15:00 - 17:00
Dinner 17:00 - 22:00 (Last Call 21:00)

✕ Irregular

🚶 7 min. walk from Tokyu Toyoko Line Toritsu-daigaku Station

Asian Restaurant
Saigon-kamimachiSignature
menuCoriander salad and shrimp
senbei

Available Year-round

Ingredients Cilantro (produced in Komae and Kitami)

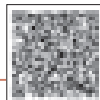
Water Spinach Stir Fry

Available Year-round

Ingredients Water Spinach (produced in Komae and Kitami)

☎ 03-3420-5581

URL

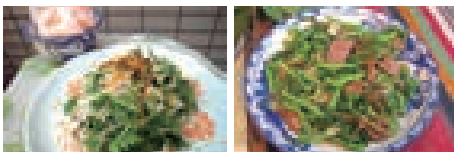


📍 3-3-5 Setagaya, Setagaya-ku

🕒 11:30 - 15:30/17:00 - 24:00

✕ Monday lunchtime
(also during summer/New Year holidays)

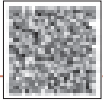
🚶 As soon as you get off at Tokyu Setagaya Line Kamimachi Station



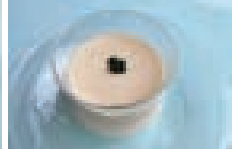
Setagaya Farm

☎ 03-3702-4500

🌐 <http://www.setagayafarm.com/>



- 📍 5-5-3 Todoroki, Setagaya-ku
- 🕒 10:00 – 20:00
- ✖ Irregular
- 🚶 1 min. walk from Tokyu Oimachi Line Oyamada Station



Signature menu

Ashitaba Namul

Available Year-round

Ingredients used *Ashitaba* (from Nijima Island)

Ashitaba Pudding

Available Year-round

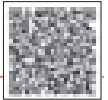
Ingredients used *Ashitaba* (from Nijima Island)



Seijo Sakurako

☎ 03-3483-5296

🌐 <http://seijosakurako.blog77.fc2.com/>



- 📍 3F Hana Bldg, 6-10-2 Seijo, Setagaya-ku
- 🕒 10:30 – 18:00 (Last Call)
- ✖ Sundays, Holidays, Mondays
- 🚶 Just steps from Odakyu Line Seijogakuen-mae North Exit



Signature menu

Okimari

Available Year-round

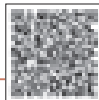
Ingredients used Various vegetables (from Kitami, Setagaya-ku), including eggplants, carrots, turnips, tomatoes, cucumbers, zucchini, bamboo shoots, potatoes, taros, spinach and Japanese mustard spinach



Jackpot Shimokitazawa

☎ 050-3184-0550

URL <http://www.jack-pot.co.jp/>



📍 2-2-4 Kitazawa, Setagaya-ku

🕒 Mon - Fri 17:00 - 24:00

Weekends and
Holidays 12:00 - 24:00

✖ Open everyday

🚶 5 min. walk from Odakyu Line, Keio Inokashira Line Shimokitazawa Station South Exit



Signature
menu

Roasted cabbage with anchovy sauce

Available Year-round

Ingredients Seasonal vegetables from used Komae

Spaghetti with oysters and seasonal vegetables

Available Winter-Spring

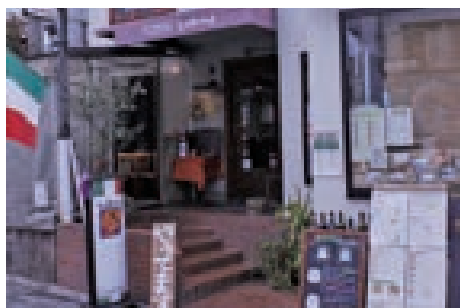
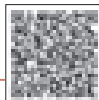
Ingredients Seasonal vegetables from used Komae



La Befana Shimokitazawa

☎ 050-3184-1675

URL <http://www.jack-pot.co.jp/>



📍 5-31-3 Daita, Setagaya-ku

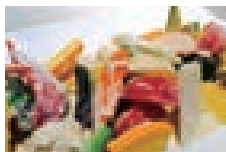
🕒 Mon - Fri 11:30 - 15:00/17:30 - 23:00 (Last Call 22:00)

Saturdays 11:30 - 15:30/17:30 - 23:00 (Last Call 22:00)

Sundays and
Holidays 11:30 - 15:00/17:30 - 22:30 (Last Call 22:00)

✖ Open everyday

🚶 1 min. walk from Odakyu Line, Keio Inokashira Line Shimokitazawa Station West Exit



Signature
menu

Assorted Vegetables with Anchovy Sauce

Available Year-round

Ingredients Seasonal vegetables from used Komae

Pizza Ortolana

Available Year-round

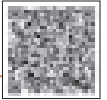
Ingredients Seasonal vegetables from used Komae



Tsuge

☎ 050-3184-1930

URL <http://www.jack-pot.co.jp/>



📍 5-29-16 Daizawa Setagaya-ku

🕒 Mon - Sat 17:00 - 23:00
Sundays (excl. holidays) 12:00 - 23:00

🗒 Open everyday

🚶 5 min. walk from Odakyu Line, Keio Inokashira Line Shimokitazawa Station



Signature menu

Fresh Raw Vegetables with Delicious Miso, Mayonnaise, and Dressing

Available Year-round

Ingredients Seasonal vegetables from used Komae

Assorted Vegetable Tempura

Available Year-round

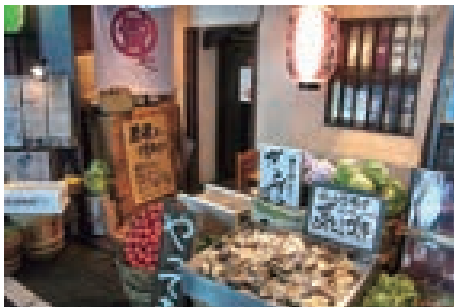
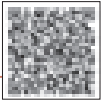
Ingredients Seasonal vegetables from used Komae



Kaminariya

☎ 050-3184-1430

URL <http://www.jack-pot.co.jp/>



📍 1F Saito Bldg., 2-19-13 Kitazawa, Setagaya-ku

🕒 Mon - Fri 17:00 - 23:00
Saturdays 13:00 - 23:00
Sundays 13:00 - 22:30
Holidays 15:00 - 22:30

🗒 Open everyday

🚶 1 min. walk from Odakyu Line, Keio Inokashira Line Shimokitazawa Station South Exit



Signature menu

Piled High Farm-fresh Vegetable Salad!

Available Year-round

Ingredients Seasonal vegetables from used Komae

Assorted *Obanzai*

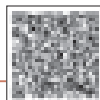
Available Year-round

Ingredients Seasonal vegetables from used Komae



Ox Tongue Natsu Hibachi

☎ 050-3184-0803

URL <http://www.jack-pot.co.jp/>

📍 5-36-13 Daizawa, Setagaya-ku

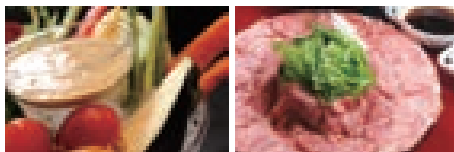
🕒 Mon - Fri 17:00 - 24:00

Saturdays 13:00 - 24:00

Sundays 13:00 - 23:00

✕ Open everyday

🚶 5 min. walk from Odakyu Line, Keio Inokashira Line Shimokitazawa Station South Exit



Signature menu

Heapings of Fresh Vegetables

Available Year-round

Ingredients Seasonal vegetables from used Komae

Tongue *Toro-shabu* Hot-pot

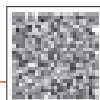
Available Year-round

Ingredients Seasonal vegetables from used Komae



Italian Restaurant GITA

☎ 03-3439-8876

URL <http://gita-setagaya.com/>

📍 3-2-10-101 Sakura, Setagaya-ku

🕒 11:30-14:00 LO (closed at 15:00)
18:00-21:00 LO (closed at 22:00)

✕ Wednesdays

🚶 Approx. 10 min. walk from Tokyu Setagaya Line Kamimachi Station



Signature menu

Homemade ham salad

Available Year-round

Ingredients Seasonal vegetables from used Setagaya

Florence-style T-bone steak

Available Year-round

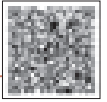
Ingredients Seasonal vegetables from used Setagaya



Hong Kong and Korean Cuisine
Ajizen

☎ **03-6479-0895**

🌐 <https://azizen.owst.jp/>



- 📍 5-1-1 Kinuta, Setagaya-ku
- 🕒 11:00 – 15:00 (Last Call 14:30)
17:00 – 23:00 (Last Call: 22:30)
- 📅 Open every day (Closed on New Year's Eve and New Year's Day)
- 🚶 10 min. walk from Odakyu Line Soshigaya-Okura Station South Exit



Signature menu

Fried Eggplant with Yu Lin Sauce/
 Fried Eggplant with Chinese Ma-po Chili Sauce

Available Year-round

Ingredients eggplants (from farms in used Komae and Setagaya)

Seasonal Fresh Vegetables
 Fried with Salt

Available Year-round

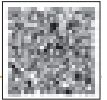
Ingredients Seasonal vegetables (from used farms in Komae and Setagaya)



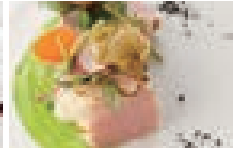
KEISUKE MATSUSHIMA

☎ **03-5772-2091**

🌐 <http://keisukematsushima.tokyo/>



- 📍 1F Park Court Jingumae, 1-4-20 Jingumae, Shibuya-ku
- 🕒 11:30 – 15:00 (Last Call 14:00)
18:00 – 22:00 (Last Call 21:00)
- 📅 Irregular
- 🚶 8 min. walk from JR Yamanote Line Harajuku Station
6 min. walk from Meiji-jingumae Station Exit 5, various train lines



Signature menu

Course example

Provence style foie gras, nougat
 Prepared seasonal fruits and Camargue salt

Available Year-round

Ingredients Tokyo honey (dependent on used the season)

Course example

Minestrone with seasonal vegetables
 Prepared *iramaki* shrimp salad, citrus coulis

Available Year-round

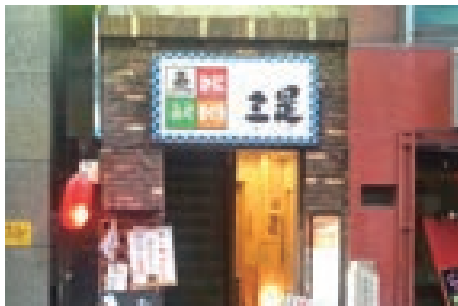
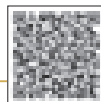
Ingredients Tokyo vegetables (dependent on the season)



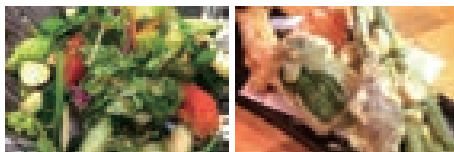
*The contents of the menu may change.

Charcoal Grill Kappo Mikore

☎ 03-3377-4488

URL <http://mikore.info/>

- 📍 B1F Tanaka Bldg, 2-11-12 Yoyogi, Shibuya-ku Dogenzaka, Shibuya-ku
- 🕒 11:30 – 5:00 next morning
- ✖ New Year Holidays
- 🚶 5 min. walk from Shinjuku Station West Exit on each line



Signature menu

Fresh Veggie Salad

Available Year-round

Ingredients Seasonal vegetables from Mitaka (cabbage, lettuce, tomato, carrot, cucumber, etc.)

Seasonal Vegetable Tempura

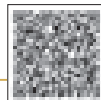
Available Year-round

Ingredients Seasonal vegetables from Mitaka (mushrooms, potatoes, shiso leaves, carrot, etc.)

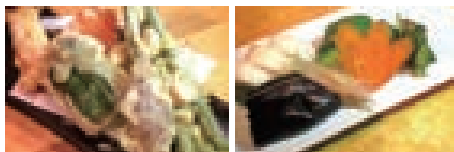


Mikore Zushi

☎ 03-3375-5008

URL <http://mikore.jp/>

- 📍 2F Matsumoto Bldg, 2-14-1 Yoyogi, Shibuya-ku Dogenzaka, Shibuya-ku
- 🕒 Mon – Fri 11:30 – 23:00
Weekends and Holidays 11:30 – 22:30
(Lunch: 11:30 – 15:00)
- ✖ New Year Holidays
- 🚶 1 min. walk from Toei Shinjuku Line Shinjuku Station Exit.6



Signature menu

Vegetable Tempura

Available Year-round

Ingredients Seasonal vegetables from Mitaka and Setagaya

Assorted Pickles

Available Year-round

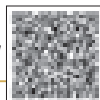
Ingredients Seasonal vegetables from Mitaka and Setagaya



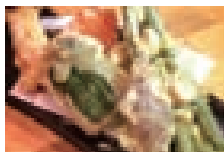
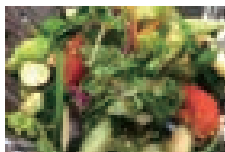
Ichiba Nakama

☎ 03-6276-7284

URL <https://www.hotpepper.jp/strJ001128021/>



- 📍 1F Tamagawa Bldg, 2-16-19 Yoyogi, Shibuya-ku
- 🕒 11:30 - 24:00
- ✖ New Year Holidays
- 🚶 5 min. walk from Shinjuku Station South Exit



Signature menu

Fresh Veggie Salad

Available Year-round

Ingredients Seasonal vegetables from used Mitaka and Setagaya

Vegetable Tempura

Available Year-round

Ingredients Seasonal vegetables from used Mitaka and Setagaya

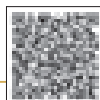


Shibuya

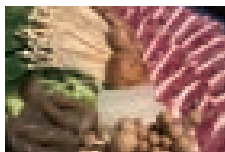
Soba Oonoya Motoyoyogicho

☎ 03-3467-7513

URL soba-oonoya.gorp.jp



- 📍 3-10 Motoyoyogicho, Shibuya-ku
- 🕒 11:30 - 15:00
17:30 - 22:30
- ✖ Sundays and Holidays
- 🚶 Odakyu Line Yoyogi-Hachiman Station (approx. 2 min. from the north exit, approx. 3 min. from the south exit)



Signature menu

Pot dish of cooked duck

Available October to May

Ingredients Edo Tokyo Vegetables (Traditional komatsuna mustard spinach, senju onions, etc.)

Karami daikon Seiro soba

Available Year-round

Ingredients Edo karami daikon radish used

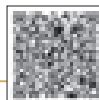


Shibuya

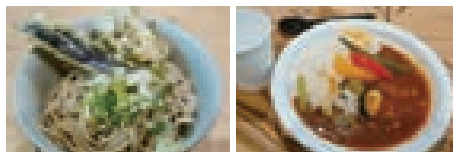
JA Tokyo Agripark

☎ 03-3370-3001

URL www.tokyo.ja.or.jp/



- 📍 2-10-12 Yoyogi, Shibuya-ku
- 🕒 11:00 - 18:30
(closing time is subject to change)
- ✖ Sundays and Mondays
- 🚶 4 min. walk from Shinjuku Station South Exit



Signature menu

Tempura and *udon* noodles with Tokyo vegetables

Available Year-round (Provided on-the-spot at events)

Ingredients Seasonal vegetables from used Tokyo

Summer vegetable curry

Available Year-round (Provided on-the-spot at events)

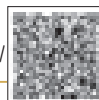
Ingredients Seasonal vegetables from used Tokyo



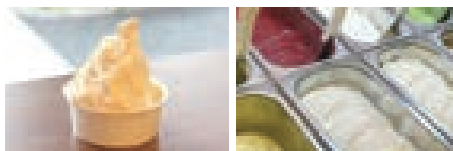
fun.ice!

☎ 080-4342-1522

URL <https://www.facebook.com/fun.iceFromTokyoYoyogi/>



- 📍 First floor, 5-64-4 Yoyogi, Shibuya-ku
- 🕒 12:00 - 19:00 Changes based on the season
- ✖ Irregular
- 🚶 5 min. walk from Tokyo Metro Chiyoda Line Yoyogi-koen Station Exit 3
5 min. walk from Odakyu Line Yoyogi-Hachiman Station
Get off at the "Yoyogi Jinencho" bus stop on Keio Bus 51



Signature menu

Gelato (premium milk)

Available Year-round

Ingredients Milk from Hachioji / Iso-numa Ranch (*Miraku* Golden Rule brand)
used Example seasonal ingredients: Tokyo Gold Kiwi from Kodaira City, peanuts from Nerima

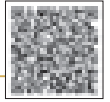


*Dependent on the season, we offer gelato that uses seasonal ingredients from Tokyo.

Royal Garden Cafe SHIBUYA

☎ 03-5456-9026

🌐 <https://royal-gardencafe.com/shibuya/>



- 📍 2F Hotel Unison, 4-3 Udagawacho, Shibuya-ku
- 🕒 11:00 - 23:00
- ✖ New Year Holidays (New Year's Eve/ New Year's Day)
- 🚶 7 min. walk from Shibuya Station, various lines



Signature menu

Recommended Seasonal Tokyo Vegetables Menu (Menu varies by season)

Available Year-round

Ingredients used Seasonal vegetables from Tokyo and Edo Tokyo

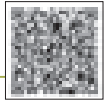


Shibuya

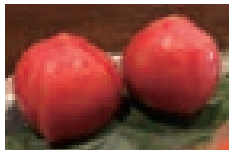
Home Dining Kuraya

☎ 03-3336-0306

🌐



- 📍 B1F Bear Valley Toritsu-Kasei, 3-6-6 Sagimiya, Nakano-ku
- 🕒 11:30 - 24:00
- ✖ Irregular
- 🚶 3 min. from Seibu Shinjuku Line, Toritsu-Kasei Station



Signature menu

Boiled komatsuna greens and soy sauce dressing

Available Year-round (depends on availability)

Ingredients used *Komatsuna* greens from Tokyo (Musashino City)

Chilled tomato

Available Summer

Ingredients used Tomatoes from Tokyo (Musashino City)



Nakano