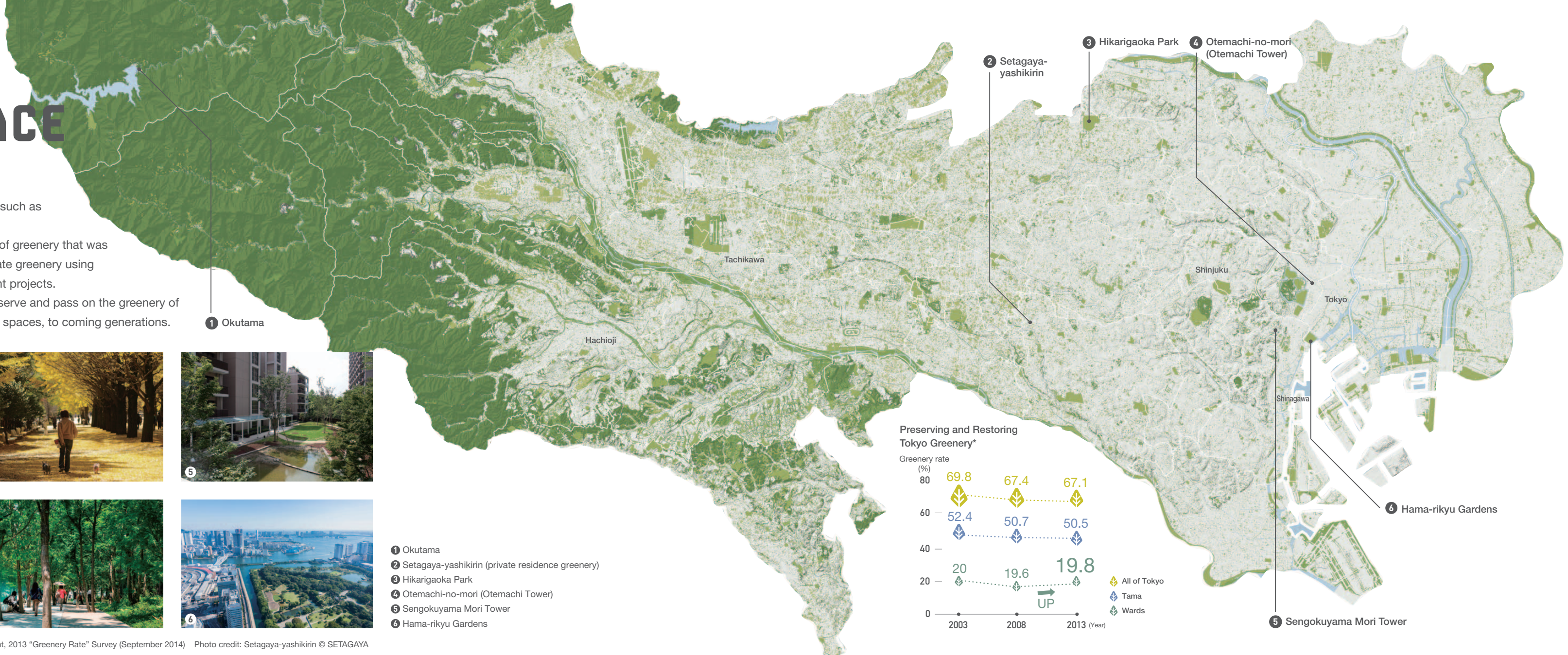


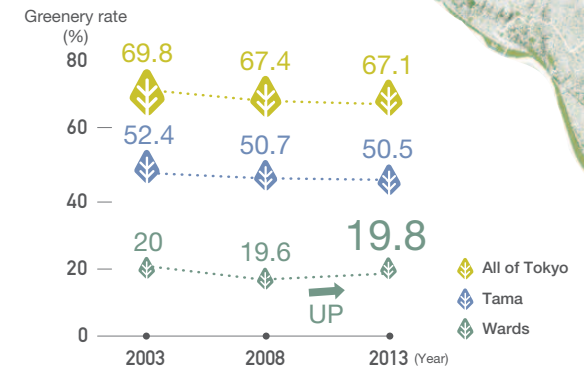
MORE GREEN SPACE

Tokyo is a city surrounded by green spaces, such as the Musashino forest. Recent years have also seen the restoration of greenery that was lost to urbanization through initiatives to create greenery using opportunities provided by urban development projects. Progress is also being made in efforts to preserve and pass on the greenery of large private residences, cliff lines, and other spaces, to coming generations.



- 1 Okutama
- 2 Setagaya-yashikirin (private residence greenery)
- 3 Hikarigaoka Park
- 4 Otemachi-no-mori (Otemachi Tower)
- 5 Sengokuyama Mori Tower
- 6 Hama-rikyu Gardens

Preserving and Restoring Tokyo Greenery*



Source: *Bureau of Environment, Tokyo Metropolitan Government, 2013 "Greenery Rate" Survey (September 2014) Photo credit: Setagaya-yashikirin © SETAGAYA